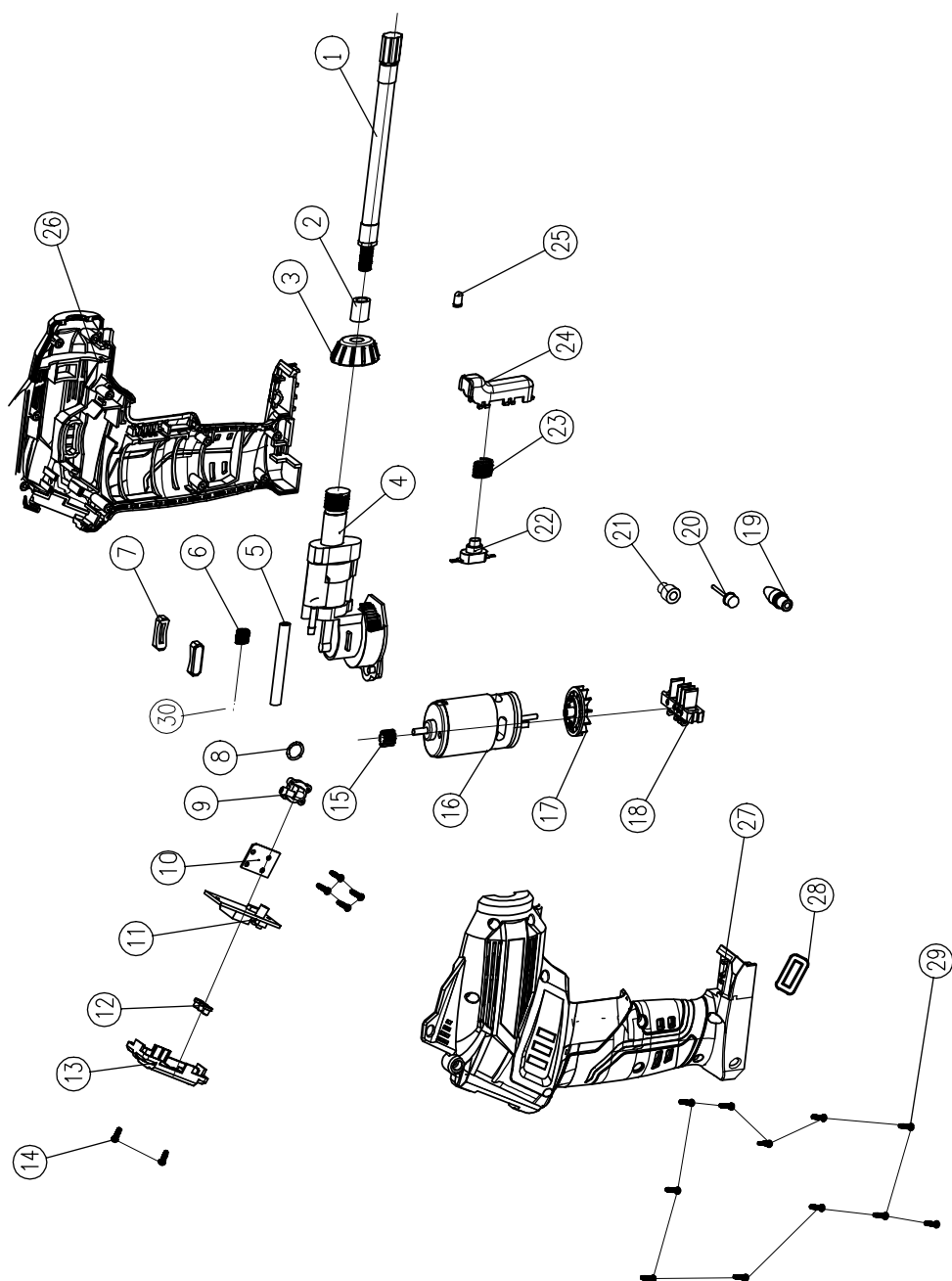


EXPLODED VIEW



NO.	Description
1	Air needle connecting tube
2	Sealing ring (Ø12xØ7.3x13)
3	plastic spiral
4	Cylinder components
5	trachea
6	Tracheal locking spring
7	Anti-shock block
8	Valve O-ring (Ø8.5 (inner diameter) x1.3)
9	Pressure measuring valve
10	pressure plate
11	LCD panel
12	Barometer button
13	Barometer cover
14	Cross recessed countersunk head self-tapping screws
15	Motor gear
16	Motor (RS550-18V)
17	fan
18	Pins + pin base (pins 2 wide and 1 narrow)
19	Universal inflatable mouth
20	ball needle
21	Replacement connector
22	switch
23	switch spring
24	switch button
25	LED light(Ø5)
26	Left housing and rubber covering
27	Right housing and rubber coating
28	Square magnetic ring (23.6x12x4.1)
29	Cross recessed self-tapping screws
30	Steel plate circlip (Ø7x7x0.6)